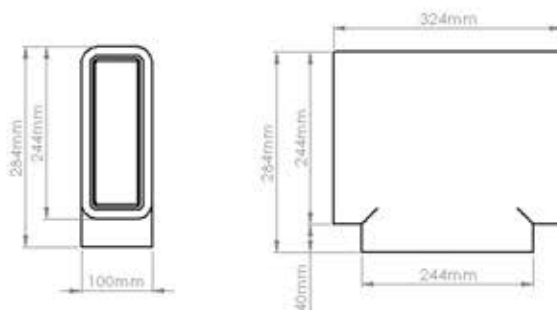
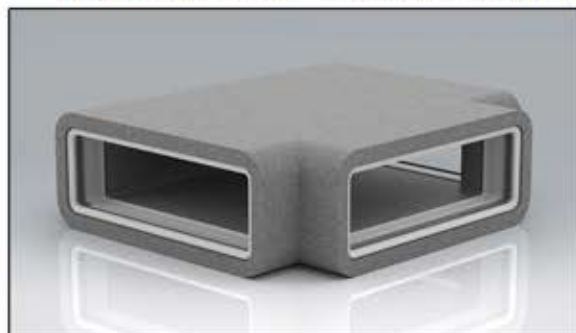


PRODUCT DATA SHEET

SST-204-TP-IND

Rapid Self-Seal Thermal 204x60mm T-Piece



MANUFACTURER:	VERPLAS LTD
PART NUMBER:	SST-204-TP-IND
SIZE:	204x60mm
FOR USE WITH:	VERPLAS THERMAL 204
BOX QUANTITY:	6
INDIVIDUAL WEIGHT:	300g
COLOUR	Grey
MIN OPERATING TEMP	-15°C
MAX OPERATING TEMP	+60°C
THERMAL RESISTANCE	0.666 m ² K/W
THERMAL CONDUCTIVITY	0.03 W/mK

SPECIFICATION DETAILS

The Verplas Self-Seal Thermal SST-204-TP-IND insulated fitting is manufactured from graphite impregnated expanded polystyrene (EPS) with a minimum density of 25kg/m³ and provides a free area of 12,232 mm². The SST-204-TP-IND is supplied with self-seal female couplings that allow the ducting fitted with a Duct to Fitting Connector to be plugged into the fitting apertures with a push, click and lock mechanism.

The Self-Seal female couplings are manufactured from prime High Impact Polystyrene and a Thermoplastic Elastomer Dynamic Sealing Gasket.

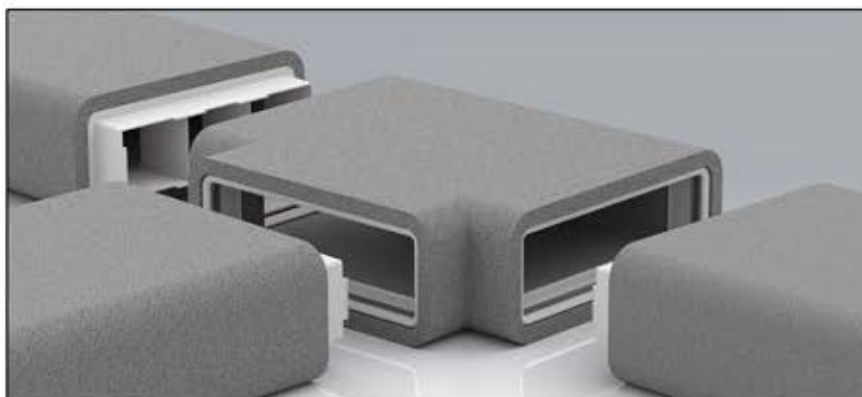
The EPS material is fully tested to meet the thermal conductivity requirements of BASF-EN13163 to assist with the prevention of condensation and is flame retardant to DIN 4102-B1.

The patented push, click and lock mechanism provides a low leakage solution which exceeds the requirements set out in DW/143 Class A leakage test and DW/154 ductwork standards.

The Self-Seal Thermal is compliant with the requirements outlined in the Energy performance characteristics database for use in SAP with MVHR and MEV supply and extract ventilation systems.

AIRFLOW RESISTANCE

8 l/s	N/A pa
13 l/s	N/A pa
21 l/s	N/A pa
30 l/s	N/A pa
60 l/s	N/A pa
120 l/s	N/A pa



Associated Ancillaries

SST-204-2M-IND 204x60mm Rapid Self-Seal Thermal 2m Flat Channel
 SST-204-45VB-IND 204x60mm Rapid Thermal Self-Seal 45° Vertical Bend
 SST-204-90HB-IND 204x60mm Rapid Self-Seal 90° Horizontal Thermal Bend



Scan Here
to find out
how quick
it is to install

